



College Participation

Goal 1:
Access & Affordability

System Initiatives:

- Two-Year College Access:** increase access and participation at two-year institutions by improving online educational opportunities, growing dual enrollment, customizing programs for nontraditional students, and promoting two-year education as a low-cost, viable entry point to high-demand occupations and/or to four-year degrees.
- GEAR UP (Gaining Early Awareness & Readiness for Undergraduate Programs):** The purpose of this federal initiative is to increase the number of low-income students who are prepared to enter and succeed in postsecondary education. Montana GEAR UP provides college and career readiness services, such as tutoring, financial aid information, enrollment in rigorous academic courses, comprehensive mentoring, college visits, supplemental curriculum materials, and professional development for school staff. The program serves these students as they progress through middle and high school. Beginning in 2012-13 academic year, *the GEAR UP grant began funding the ACT test for all Montana public high school juniors!*

Updated: 12/30/2015

Goal Statement

Prepare students for success in life through quality higher education

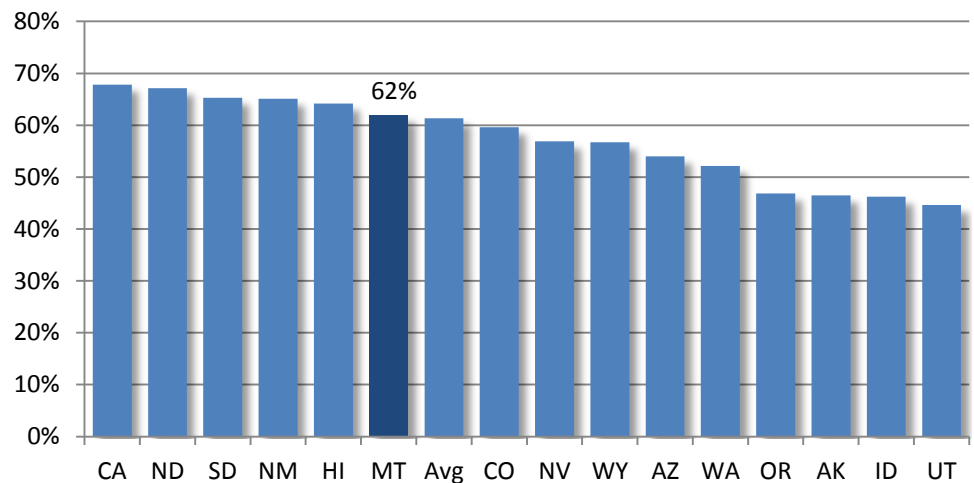
Objective 1.1.1

Improve postsecondary education participation rates, with particular attention to Montana residents in MUS institutions

Metric 1.1.1

College Continuation Rate, Fall 2014

% of high school graduates attending college immediately following graduation



Montana College Continuation Rate

% of Montana high school graduates enrolling in college in the fall semester immediately following graduation

College Continuation Rate	2004	2006	2008	2010	2012	2014
# of MT High School Graduates (public & private)	11,007	10,734	10,986	10,246	9,575	9,228
# of MT Grads Enrolling in College	6,236	6,141	6,153	6,217	5,841	5,714
# of MT Grads Enrolling In-state	4,663	4,680	4,789	5,020	4,598	4,503
# of MT Grads Enrolling Out-of-state	1,573	1,461	1,364	1,197	1,243	1,211

% of MT Grads Enrolling in College	57%	57%	56%	61%	61%	62%
% of MT Grads Enrolling In-state	42%	44%	44%	49%	48%	49%
% of MT Grads Enrolling Out-of-state	14%	14%	12%	12%	13%	13%